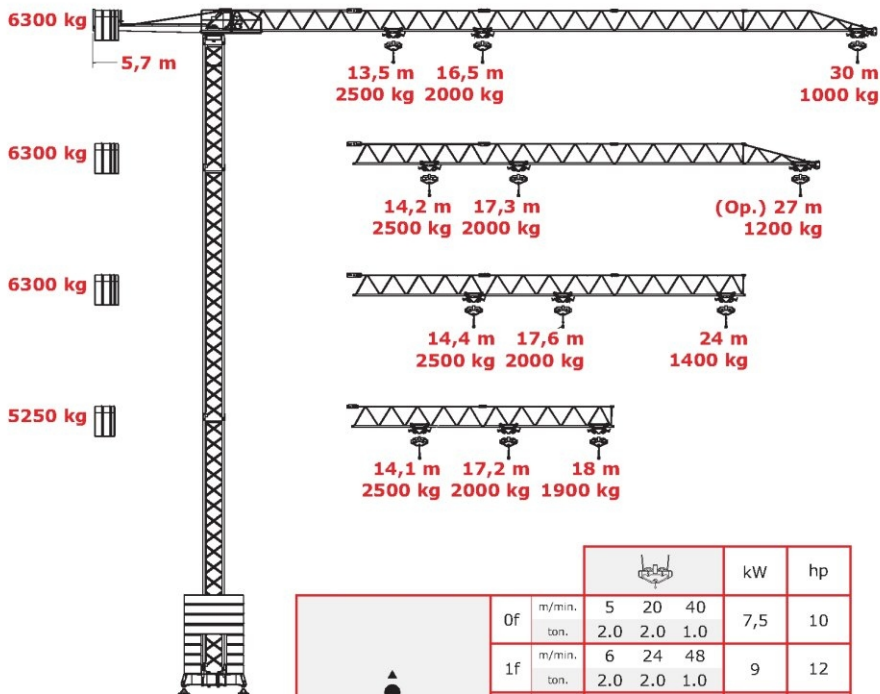








Grua Torre

Tower Crane

IT30f



					kW	hp	
	0f	m/min.	5	20	40	7,5	10
		ton.	2.0	2.0	1.0		
	1f	m/min.	6	24	48	9	12
		ton.	2.0	2.0	1.0		
2f	m/min.	6	29	58	11	15	
	ton.	2.5	2.5	1.25			
		m/min.					
		ton.					
		m/min.	15	30	50	2,2	3
		rpm	1,2			3	4
CEI 38		IEC 38	kVA				
400V (+6% -10%) 50Hz		0f - 16 kVA		2f - 20 kVA		2000 / 14 / CE	
		1f - 18 kVA					

Flat-Top