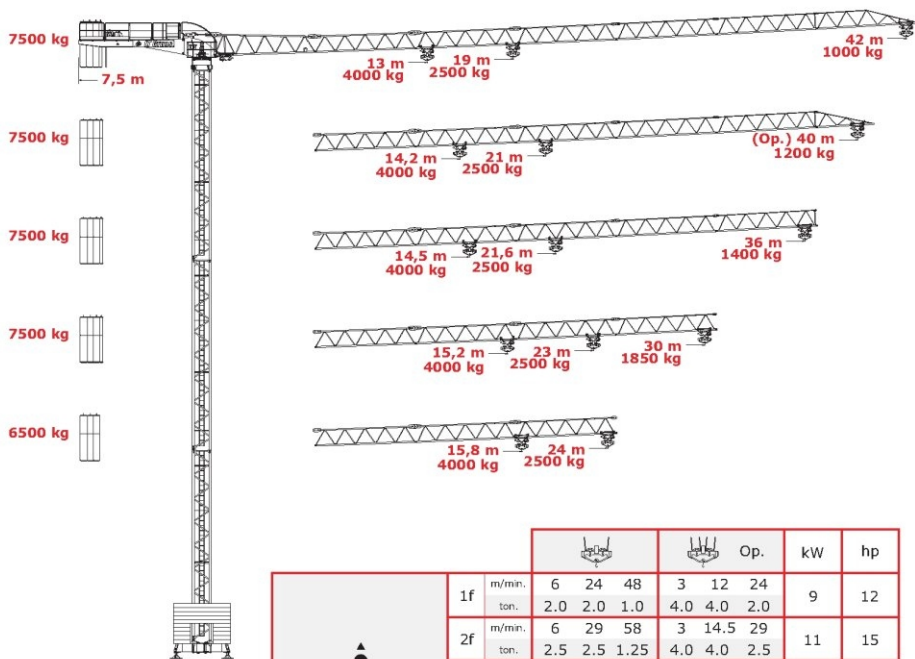


# Grua Torre

## Tower Crane

# IT42f



		↕			↕ Op.			kW	hp	
↕	1f	m/min.	6	24	48	3	12	24	9	12
		ton.	2.0	2.0	1.0	4.0	4.0	2.0		
	2f	m/min.	6	29	58	3	14.5	29	11	15
		ton.	2.5	2.5	1.25	4.0	4.0	2.5		
3f	m/min.	8	34	68	4	17	34	13	18	
	ton.	2.5	2.5	1.25	4.0	4.0	2.5			
4f	m/min.	10	39	78	5	19.5	39	19	26	
	ton.	2.5	2.5	1.25	4.0	4.0	2.5			
↔		m/min.	20 38 58						3	4
↻		rpm	0,91						3,7	5

CEI 38	IEC 38	KVA	↻
400V (+6% -10%) 50Hz	1f - 20 kVA 2f - 22 kVA	3f - 25 kVA 4f - 32 kVA	2000 / 14 / CE

# Flat-Top