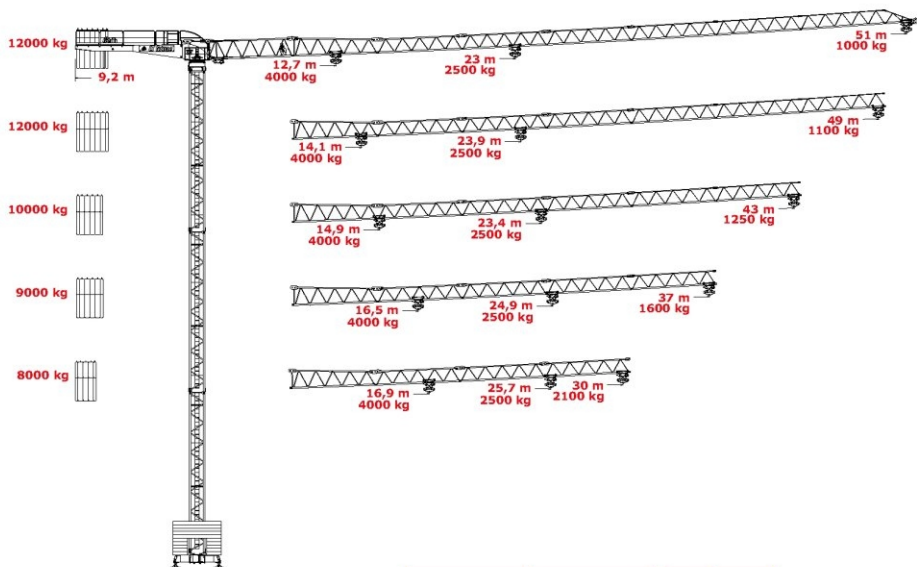


Grua Torre

Tower Crane

IT51f



		↑		↓		Op.	kW	hp
▲	1f	m/min. ton.	6 2.0	24 2.0	48 1.0	3 4.0	12 4.0	24 2.0
	2f	m/min. ton.	6 2.5	29 2.5	58 1.25	3 4.0	14.5 4.0	29 2.5
	3f	m/min. ton.	8 2.5	34 2.5	68 1.25	4 4.0	17 4.0	34 2.5
	4f	m/min. ton.	10 2.5	39 2.5	78 1.25	5 4.0	19.5 4.0	39 2.5
◀▶	m/min.	20 38 58					3	4
⦿	rpm				0,91		4,8	6,5
CEI 38 IEC 38		kVA				2000 / 14 / CE		
400V (+6% -10%) 50Hz		1f - 21 kVA 2f - 24 kVA		3f - 26 kVA 4f - 34 kVA				

Flat-Top