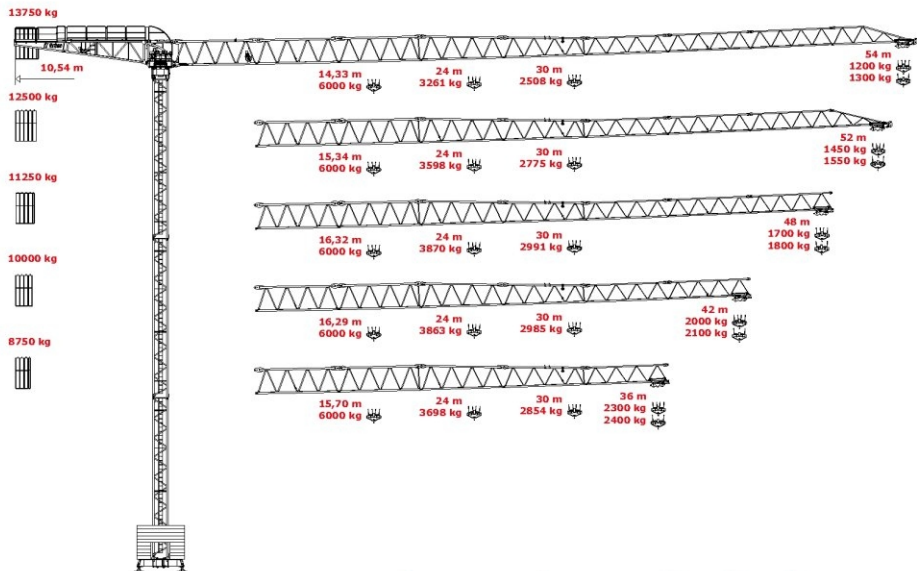


# Grua Torre

## Tower Crane

# IT54f



								Op.	kW	hp
	<b>4f</b>	m/min.	6	29	58	3	14.5	29	18.4	25
	<b>4fd</b>	ton.	3.0	3.0	1.5	6.0	6.0	3.0		
	<b>5f</b>	m/min.	8	35	70	4	17.5	35	24.3	33
	<b>5fd</b>	ton.	3.0	3.0	1.5	6.0	6.0	3.0		
	<b>6f</b>	m/min.	11	44	88	6	22	44	29.5	40
	<b>6fd</b>	ton.	3.0	3.0	1.5	6.0	6.0	3.0		
<b>7f</b>	m/min.	10	52.5	105	5	26	52.5	33	45	
<b>7fd</b>	ton.	3.0	3.0	1.5	6.0	6.0	3.0			
	m/min.	20			38	67		4	5.5	
	rpm				0.76			2 x 4	2 x 5.5	
CE   38  IEC 38		kVA								
400V (+6% -10%) 50Hz		4f - 38 kVA 5f - 46 kVA		6f - 52 kVA 7f - 57 kVA		2000 / 14 / CE				

# Flat-Top