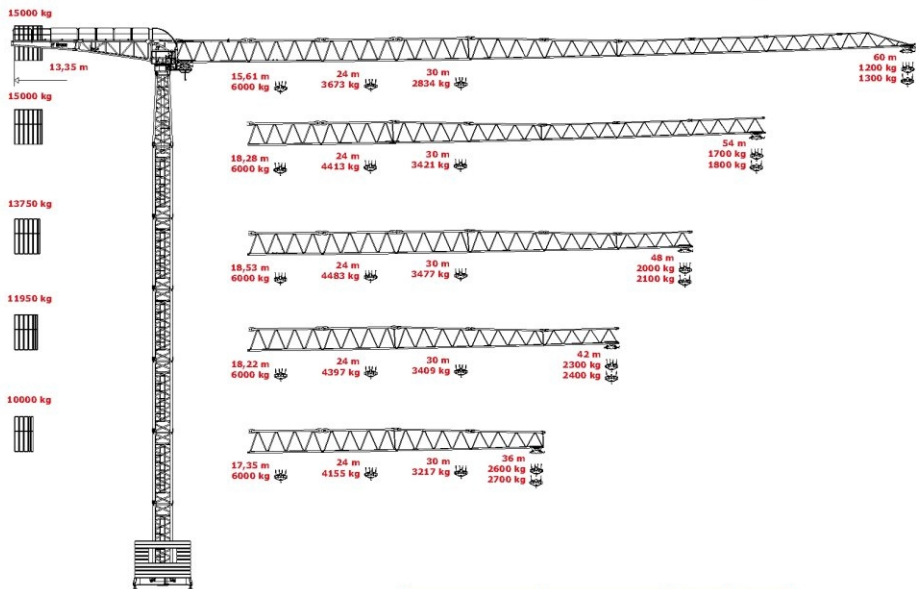


# Grua Torre

## Tower Crane

# IT60f



								Op.	kW	hp		
	4f	m/min.	6	29	58	3	14.5	29	18.4	25		
	4fd	ton.	3.0	3.0	1.5	6.0	6.0	3.0				
	5f	m/min.	8	35	70	4	17.5	35	24.3	33		
	5fd	ton.	3.0	3.0	1.5	6.0	6.0	3.0				
	6f	m/min.	11	44	88	6	22	44	29.5	40		
	6fd	ton.	3.0	3.0	1.5	6.0	6.0	3.0				
	7f	m/min.	10	52.5	105	5	26	52.5	33	45		
7fd	ton.	3.0	3.0	1.5	6.0	6.0	3.0					
		m/min.	20			38			67		4	5.5
		rpm				0.76			2 x 4.8		2 x 6.5	
CEI 38		kVA										
400V (+6% -10%) 50Hz		4f - 41 kVA 5f - 48 kVA		6f - 55 kVA 7f - 59 kVA		2000 / 14 / CE						

# Flat-Top