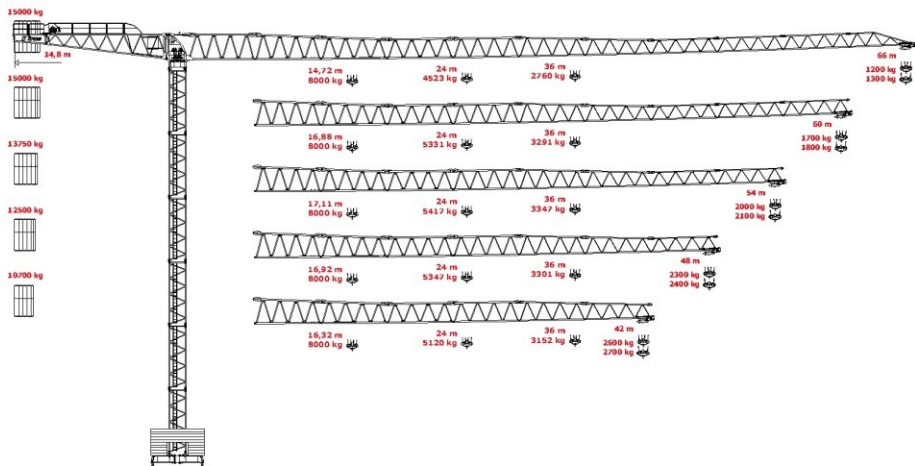


# Grua Torre

## Tower Crane

# IT66f



								Op.	kW	hp
	6f	m/min.	8	35	70	4	17.5	35	29.5	40
	6fd	ton.	4.0	4.0	2.0	8.0	8.0	4.0		
	7f	m/min.	8	39	78	4	19.5	39	33	45
	7fd	ton.	4.0	4.0	2.0	8.0	8.0	4.0		
	8f	m/min.	10	44	88	5	22	44	40	55
	8fd	ton.	4.0	4.0	2.0	8.0	8.0	4.0		
9f	m/min.	10	59	128	5	29.5	59	55	75	
9fd	ton.	4.0	4.0	2.0	8.0	8.0	4.0			
	m/min.	20			45	90		4.8	6.5	
	rpm				0.70			2 x 7.5	2 x 10	
CEI 38		IEC 38								
400V (+6% -10%) 50Hz		6f - 62 kVA		8f - 75 kVA		9f - 94 kVA		2000 / 14 / CE		

# Flat-Top